

SA1 Power Supply Board

P/N 83-132400-200

FEATURES

- **Factory Mutual Approved for Off Road Vehicles**
- **-40F (-40C) to 158F (70C) Operating Range**
- **Pin Connector**
- **12/24Vdc Supply**
- **CE Approved**

DESCRIPTION

The Power Supply Board regulates the 12/24 Vdc vehicle power wiring via the Power Cable Harness to the SA1 panel. Alternatively, the power wiring may be field fabricated as well.

The Power Supply Board ships separately and installs easily into the SA1 panel with the included fastener kit.

When using powered detectors, Kidde requires using the Power Supply Board with the SA1 panel. An optional one hour stand-by battery may be affixed to the Power Supply Board as well.

REFERENCED COMPONENTS

Description	Reference Data Sheet
SA1 Panel	K-83-206
Battery, Optional One Hour Stand-By	K-83-237
Cable Harness, Power	K-83-240

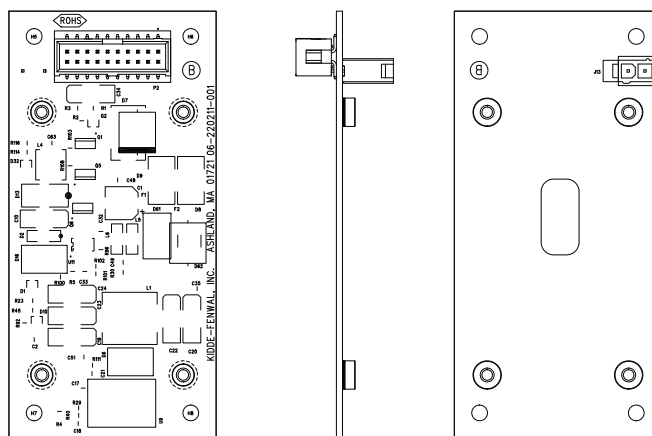


Figure 1. Power Supply Board

All trademarks are the property of their respective owners.

This literature is provided for informational purposes only. Kidde-Fenwal, Inc. assumes no responsibility for the product's suitability for a particular application. The product must be properly applied to work correctly. The technical data contained herein is limited strictly for informational purposes only. Kidde-Fenwal, Inc. believes this data to be accurate, but it is published and presented without any guarantee or warranty whatsoever. If you need more information on this product, or if you have a particular problem or question, contact Kidde-Fenwal, Inc.